



Theatre Technical Specifications

BROUGHT TO YOU BY
ALBURYCITY

 facebook.com/alburyentertainmentcentre

T 02 6043 5610
F 02 6043 5629
E entertainment@alburycity.nsw.gov.au
* alburyentertainmentcentre.com.au

Contents

General Information	4
Staging	5
Audio	11
Lighting	14
Audio-visual	19
Stage Managers Desk	23
Power	25
Amenities	26

Update	Staging, photos	18/6/2021	JP
	Specs, bar loadings	2/7/2021	RP
	Green Room, Projector	25/8/2022	JP
	Audio additions	04/10/2023	DT
	Lighting Plot	10/01/2023	DT
	LX, SMD	24/1/2023	BS
	Site Access	19/03-2024	JP
	Piano	22-08-2024	JP
	Internet, Staging	18/10/2024	DT
	General Info	05-04-2025	JP

General Information

Venue Address: 525 Swift Street, Albury, NSW 2640
Postal Address: PO Box 323, Albury, NSW, 2640
Phone: (02) 6043 5610
Email: entertainment@alburycity.nsw.gov.au

The Albury Entertainment Centre is renowned as one of Nation's leading regional venues and has played host to some of the biggest acts from Australia and abroad. The venue is ideally located in the heart of the Albury CBD.

The auditorium, housed within the venue's Theatre Wing can accommodate more than 800 guests in tiered seating across two levels.

The venue also houses an intimate 177 seat theatrette within the Entertainment Centre's Convention Wing (please refer to Convention Wing Technical Specifications for further information regarding this space).

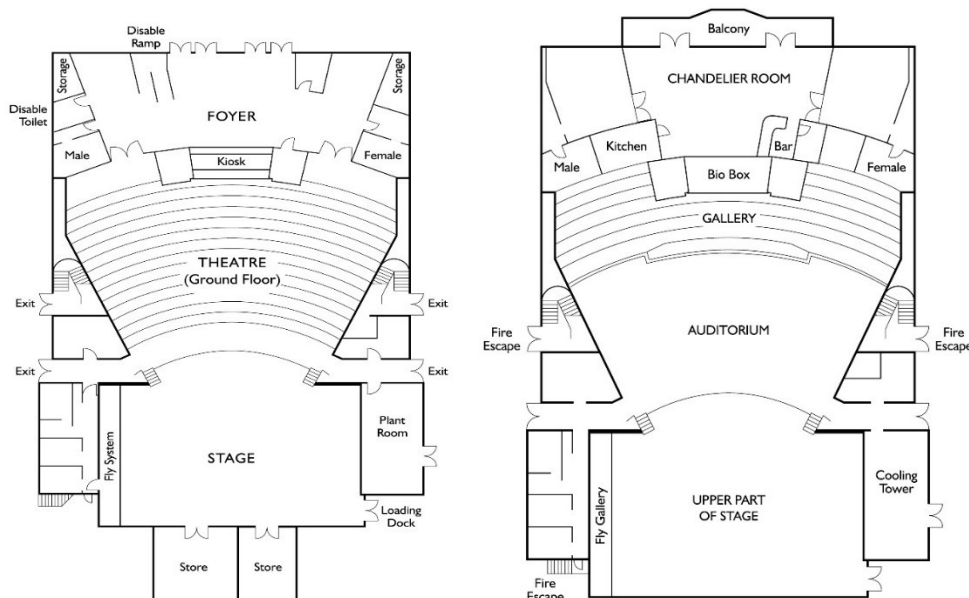
With extensive facilities and equipment, along with the expertise of dedicated and qualified technicians, the Albury Entertainment Centre is well equipped to meet any request.

Generally speaking, Theatrical lighting comes with venue hire, with all other equipment at the hirer's cost, including labour. Minimum 3hr for all staff. Minimum requirement is for a Duty Technician. The Duty Technician is responsible for onstage safety, communication to FOH & other departments, go to for all hirer's. This person must be positioned onstage during all rehearsals and performances.

Auditorium Seating Capacity

The Albury Entertainment Centre Auditorium comprises of the stalls and one balcony level (Gallery).

- Full House Capacity (Stalls & Gallery) 818 seats
- Full House Capacity (with stalls mixing position) 800 seats
- Stalls only (No Gallery) 495 seats
- Stalls only (with stalls mixing position) 477 seats
- Stalls mixing position removes – N21 – N28 & O21 – O28 17 seats
- *Note: FOH mixing position is withheld from sale until instructed to reinstate.*



Loading Dock

Truck access via car park off Swift St. Truck can reverse up to loading dock.

The loading dock is open to the weather, and is at stage height, so a lifter or ramp must be used.

Please be advised that this is a public thoroughfare. Please ensure you carry safety equipment to identify the loading area, so that pedestrians are aware of where to walk. It is preferable that the footpath is not obstructed. AEC staff will work with you to ensure safe access to everyone.

- Loading Dock Height Ground level
- Door Height 2950mm High
- Door Width 2080mm Wide

Restrictions/Obstructions

Dock door at 90° to rear of truck

Parking

- Located from swift street
- There is limited parking available and must be pre-arranged
- If your truck cannot fit in the parking bays, it must leave site.
- No Semi trailers are allowed to remain on site.
- Trucks should be removed as soon as practical.

Stage Door

From Outside to Dressing Rooms

- Located from Swift Street, North East corner of the building

From Dressing Rooms to Stage (BOH to Stage)

- PS US wall between fly lines 18 and 19

Staging

Stage composition

The auditorium stage is constructed of High Impact Masonite over plywood on steel joists and bearers. The stage is raked and has a proscenium arch, apron/orchestra pit and a manual fly system.

Current stage coating is Rosco Stage Paint – Black.

Prior to any alterations being made to the auditorium stage, venue staff must grant permission.

Staging Facilities

What	Quantity
Chairs – straight leg banquet	Over 800
Music stands -	6
Sconce lights – Battery powered dual gooseneck style.	2
Stage risers – SICO 1800 series 1830 x 2440 @ 600 or 800mm. With black Carpet tops, skirts and stairs.	6
Stage risers – SICO 1800 series 1830 x 2440 @ 400mm	2

Piano tuning included in hire cost, any additional tunings at presenter's expense.

Elevated Work Platform

- Model JLG 20MVL Self Powered Drivable vertical lift
- Maximum reach 5940mm

EWP Restrictions

Operator must be inducted by AEC staff before using the EWP

Ladders

- 1 x 4m A-Frame Aluminium
- 1 x 6m Fiberglass Little Giant Ladder (A1 multifold type)
- 1 x 2m A-Frame

Piano

- Yamaha C7X 227cm Grand Piano – Polished Ebony
- Piano will be tuned prior to client arrival unless otherwise requested
- Minimum two person move
- No drinks or food of any type to be placed on piano
- No preparation of piano (no plucking or placing anything within the strings)

Stage Load

“Stage” refers to the entire area behind the proscenium arch and up to but not including the apron/orchestra pit cover. There is no official loading figure for the apron/orchestra pit. As such, no heavy equipment including but not limited to the venue elevated work platform or grand piano may be placed on the apron/orchestra pit area. For further clarification regarding the use of the apron/orchestra pit, please consult venue staff.

- Stage distributed load limit 750kg/m² or 7.5kPa
- Stage point load limit 450kg/25mm² or 4.5kN

Stage Dimensions

Stage Rake

- Rake 1:80

Proscenium Arch

- Height 5,486mm
- Width 12,410mm

Setting Line

- Distance upstage of proscenium arch 406mm

Stage Measurements

- Setting line to edge of apron/Orch Pit (downstage) 3,625mm
- Setting line to fly line 1 0mm
- Setting Line to fly line 20 (last fly line) 9,404mm
- Setting line to rear wall 11,544mm
- Centre line to opposite prompt wall (or obstruction) 9,625mm
- Centre line to prompt side wall (or obstruction) 9,085mm
- Stage to underside of grid 14,000mm

Overhead Obstructions

The fly galley runs from the proscenium arch downstage wall to the upstage wall.

- Height 5,440mm
- Width 2,000mm

(Lighting looms may create a small degree of off stage, overhead obstruction.)

Stage Covers

A minimal amount of carpet is available to dampen footsteps in off stage areas.

Stage Traps (for electrics only)

There are three stage traps located on prompt side and an additional opposite prompt. Each downstage and mid-stage trap contains three dimmable circuits. Two dimmable circuits are contained in each upstage trap.

Orchestra Pit

The orchestra pit is located directly underneath the apron, in front of the proscenium arch. The pit is exposed by removing the apron staging surface, hence reducing the available stage size. The removal and replacement of the apron requires a minimum for four crew personnel and is by manual operation only. There is no lift available. Access to the pit is from the auditorium only. No backstage access to the pit is available. *Appropriate charges apply for the removal and reinstallation.*

- Orchestra pit covers level below stage height 0mm
- Stage Max 1200mm
- Orchestra pit level below stage height -1600mm
- Orchestra pit internal dimensions 2,200mm (at arc peak) x 10,630mm
- Orchestra pit capacity 25 pax

Draperies

TYPE	MATERIAL	COLOUR	WIDTH	HEIGHT	QUANTITY
House Curtain	Velvet	Maroon	Full	Full	1
Borders	Wool (50% gathered)	Black	13,000mm	3,000mm	4
Legs	Wool (50% gathered)	Black	1,500mm	7,000mm	10
Tabs/Smother	Wool (50% gathered)	Black	13,000mm	7,000mm	2
Cyclorama	Cotton filled cloth	White	15,000mm	9,000mm	1
Scrim	Cotton filled cloth	Black	Full	Full	1

Fly System

The Albury Entertainment Centre Fly System is a single purchase handline system.

- Operating position Prompt side at stage level
- Total number of lines 20
- Panorama lines N/A
- **Batten drift** **10,200mm**
- Batten length 16,000mm
- Batten type 48mm O/D pipe
- Batten extensions N/A
- Batten pick-ups 4 pick-ups (4m +/- 0.2m between each)
- Batten point load SWL 300kg (including bar)
- Batten working load limit SWL 300kg (including bar)
- Cradle capacity 350kg
- LX bars Cannot be swung
- Fly bars Can be swung

Rigging Notes

- All flown items must be rigged with rated equipment and is subject to approval by a venue representative. Stage gallery is located prompt side only, access from prompt side. Very limited rigging gear available in house
- Harnesses and appropriate safety equipment must be used in accordance with Work cover guidelines and in house policy/procedure. The venue has 2 designated rigging points in the auditorium at 7 meters and 2 points which are 5 meters from the proscenium arch, NO LIVE LOAD. Slings, blocks, and all rigging equipment must be supplied by the hirer and rigged by a certified rigger at hirers cost.

loading dock

nose

LINE 20: Cycloorama Curtain
LINE 19: Erench/Traveller



9404 mm
8992 mm

LINE 18: Cyc Flood



6804 mm

LINE 17: Border



6400 mm

LINE 16: LX4



6000 mm

LINE 15: Legs



5594 mm

LINE 14: Border



5196 mm

LINE 13: Spare



4804 mm

LINE 12: LX3



4404 mm

LINE 11: Fench/Traveller



4000 mm

LINE 10: Border



3606 mm

LINE 9: Spare



3204 mm

LINE 8: Legs



2804 mm

LINE 7: LX2



2590 mm

LINE 6: Border



2000 mm

LINE 5: Legs



1606 mm

LINE 4: Spare



1206 mm

LINE 3: LX1



804 mm

LINE 2: Legs



400 mm

LINE 1: FOH Maroon Curtain



0 mm

3625

STAGE FLYS

scale 1:100

Hanging Plot

LINE	DISTANCE FROM SL	LINE TYPE	MAX LOAD*	BATON LENGTH	PIPE O/D	VENUE ALLOCATION	NOTES
1	0mm	SP	270kg	16,000mm	48mm	FOH Curtain Maroon	Fixed
2	400mm	SP	270kg	16,000mm	48mm	Legs	-
3	804mm	SP	160kg	16,000mm	48mm	LX1	Fixed
4	1,206mm	SP	270kg	16,000mm	48mm	Spare	
5	1,606mm	SP	270kg	16,000mm	48mm	Legs	-
6	2,000mm	SP	270kg	16,000mm	48mm	Border	-
7	2,590mm	SP	160kg	16,000mm	48mm	LX2	Fixed
8	2,804mm	SP	270kg	16,000mm	48mm	Legs	-
9	3,204mm	SP	270kg	16,000mm	48mm	Spare	-
10	3,606mm	SP	270kg	16,000mm	48mm	Border	-
11	4,000mm	SP	270kg	16,000mm	N/A Tab.	French/Traveller	Prior notice to change
12	4,404mm	SP	160kg	16,000mm	48mm	LX3	Fixed
13	4,804mm	SP	270kg	16,000mm	48mm	Spare	-
14	5,196mm	SP	270kg	16,000mm	48mm	Border	-
15	5,594mm	SP	270kg	16,000mm	48mm	Legs	-
16	6,000mm	SP	160kg	16,000mm	48mm	LX4	Fixed
17	6,400mm	SP	270kg	16,000mm	48mm	Border	-
18	6,804mm	SP	220kg	16,000mm	48mm	Cyc floods + Legs	Ladder Batt
19	8,992mm	SP	270kg	16,000mm	N/A Tab.	French/Traveller	Prior notice to change
20	9,404mm	SP	270kg	16,000mm	35mm	Cyclorama	-

* Max Load is the maximum allowable load after pipe, ladder bracing and attached looms are subtracted from the Safe Working Load Limit of 300 kg each.

SP = Single Purchase

Audio

Control Positions

- Control Room / Bio box No glass, no scrim. Limited visibility
- Rear centre of Gallery No glass, no scrim. Under balcony. Seats to be removed
- Stage Prompt at SM desk Mixer can be patched through the main console

Control & Amplification

Mixing Desks

- Digico SD9 + D2 rack (MADI, CAT5E STP) Main Theatre mixing desk.

Channels	96 @ 48 or 96 Khz/24 bit.
Mic/line inputs	48 + 8
Outputs	16 + 8 + 4 AES Digital Audio
Auxiliaries/Busses	48
Effects	12
Matrix	12 x 8
Output GEQ's	16
Inserts	155 dynamics, 155 Gates, 155 Digitubes
- Allen & Heath SQ6 + DT168 Rack (Dante) Back-up Theatre Mixing desk

Processors (House PA system, cannot be altered)

- BSS Soundweb London 12/12 (Cross-overs, Delays and analogue inputs)
- Nexo Processing in NX 4 x 4 and 4 x 1 amplifiers

Amplifiers

- 1 x Nexo NX 4 x 4 power amplifier, 1900w @ 8 ohms (L, R, Centre speakers)
With AES Card for Digital inputs directly from D Rack
- 1 x Camco, Vortex 6, 2 channel, 920w + 920 w @ 8 ohms (subs)
- 1 x Nexo NX 4 x 1 power amplifier, 4 x 1000w @ 8 ohms for all Delay speakers.

Outboard processing available on request

- 2 x Dual DBX 31 band 1231
- Lexicon MX300 Stereo dual Multi effects
- 1 x Klark Technik Square One Dynamics (8 x gates and compressor/limiters)

Speakers

FOH Speakers

Left/Right

- Nexo, PS15R2 x 2, 1 Left and 1 Right top of pros arch

Centre

- Nexo, Geo S, 8" x 4, Centre Cluster, 3' forward of pros arch

Sub

- Quest, Double 18" Front loaded x 2, B&C Drivers (under apron)

Gallery Fill

- Nexo, PS10 x 3, Evenly Distributed across FOH bridge 2

Under Gallery Fill

- JBL Control 25 x 2

Front of Apron Fill

- JBL Control 25 x 4

Foldback

- 8 x RCF NX 12-SMA, 12" (coaxial, self-powered, low profile, foldback wedges, 700 watts RMS)
- 2 x HK Audio DART 12" (2-way, self-powered foldback wedge, 300 watts RMS)

Extra Apron Infill Speakers

- 2x Quest HPI18BP
- 2x Nexo PS15R1

Microphones

- Shure
 - SM58 7 x microphones, 2 with switches (multi purpose, dynamic)
 - Beta 58A 2 x microphones (multi purpose, dynamic)
 - SM57 8 x microphones (instruments, dynamic)
 - Beta 91A 1 x microphones (plate, instrument)
 - ULXD H51/Beta 58 8 x microphones (handheld/lapel/head worn)534-598 Mhz
 - ULXD H51/SM58 1 x microphone (handheld)534-598 Mhz
 - SLX/SM58 1 x microphone (handheld/lapel)
 - ULX S4/SM58 2 x microphones (handheld/lapel)
 - ULX S4/SM58 1 x microphone (handheld)
- Sennheiser
 - E935 2 x microphones (multi purpose, dynamic)
- Audix
 - D6 1 x microphone (kick drum/bass instruments)
 - D2 2 x microphones (percussion/Brass)
 - D4 1 x microphone (percussion/Brass)
 - I5 1 x microphone (snare/instruments)
 - SCX1C 2 x microphones (cardioid, overhead/instruments)
 - SCX1HC 1 x microphone (hyper cardioid, hi-hat/instruments)
- DPA
 - 4099 Core 2 x microphones with piano kit (Loud SPL, instruments)
- AKG
 - D880s 2 x microphones (multi-purpose, switched)
 - D180 1 x microphone (multi purpose)
- Audio Technica
 - Pro 45 12" 2 x gooseneck microphones (lectern)
 - Pro 37 4 x microphones (instruments/choirs)
- Countryman
 - Isomax RF4 18" 2 x Gooseneck microphones (lectern)

Microphone Stands

- Round Base 4 x straight stands – K&M (black)
- Tri Base Black 13 x boom stands – K&M 210
- Tri Base Chrome 4 x boom stands – K&M 210
- Tri Base Black 10 x medium height booms – K&M 25975
- Tri Base Black 1 x Extra Low Stand – K&M 259/1
- Zephyr Style cast solid base 4 x straight stands
- K&M long booms 2 x (chrome)
- Stereo bar 2 x microphones A-B/ X-Y positioning

Audio Playback

- Mac Book Pro 2 x 13" 2020 OS Monterey (QLab video licence)
- Marantz CDR510 Dual CD (1x disc record/2 x disc playback), single track play
- Dennon DNC635 Single CD playback, single track play, pitch control
- CD/DVD player Various available as backup audio playback
- Dell PC Laptop 2 x Windows 10 (VLC Powerpoint, iTunes, media Player, Quicktime)

Audio Accessories

- Radial JDI Passive DI 6 x available
- Radial J48 Active DI 2 x available
- Whirlwind IMP2 Mono DI with ground Lift 4 x available
- ARX USB DI Plus Stereo USB to analogue DI plus Stereo Analogue 3.5/6.5mm inputs
- Steinberg UR22C 2 x USBC 2 in/2 out 32-bit USB audio interface
- RME MADiface Dante 64 Madi (2 x BNC) Channels to Dante, cross patching and USB host.
- Wired In Ear System 4 x available LD Systems HPA1

Audio Patching

- Stage PS – OP Link 12 x lines (A-L). Female XLR on each breakout box. Adaptors required
- Stage OP – Control 20 x lines numbered 1-20. Main patch to control room. Female XLR on stage breakout box. Male XLR loom at control position. No returns without using adaptors.
- Stage PS – Control 20 x lines (1-20). Secondary patch to control room. Female XLR on stage breakout box. Male XLR loom at control position. 4 x returns (Male XLR on stage and Female XLR loom at control)

Speaker Patching

Speaker patching is hard wired. Amps and input patching located on stage at OP/DS corner.

Audio Notes

Recommend using auditorium position for live mixing but reduces available seats in stalls area.

Access to the system processor/Sound Web is prohibited.

Patching of external equipment into house PA must be approved by the on-duty venue technician.

Lighting

Positions

Stage LX Bars

See fly plot for standard LX bar locations

FOH Bridge

- Setting line to bar PS/OP 14,400mm 29°
- Setting line to bar C 13,300mm 40°
- Usable bar width 19,500mm

Balcony Bars

There are two symmetrical lighting bars, one each side of the balcony

- Setting line to bar PS/OP 15,360 mm 30°
- Setting line to bar C 15,520 mm 30°
- Usable bar width 5,000mm

FOH Perches (PS & OP)

Note: rigging in this position is challenging.

- Setting Line to FOH Perch 8,980mm 35°
- Max lanterns per perch 4, more if fixtures are small
- Number of circuits per perch 8 circuits

Control

grandMA3 light

ETC Ion (with one 40 x fader wing)

- Control channels 6144 control channels
- Signal output DMX/Artnet/SACN
- Signal distribution RJ45 Ethercon
- Alternate distribution 2 x 5 pin XLR/3 pin XLR (via adaptor)

Jands Stage CL

- Control channels 24 x Fixtures (2 x pages of 12 fixtures)
- Signal output DMX/Artnet
- Signal distribution 5 pin XLR
- Alternate distribution 3 pin XLR (via adaptor)/RJ45 Ethercon

Dimmers

- Total Dimmers 228 channels
- Dimmer Room Access via PS Fire Exit
- Dimmer Model LSC TekoV3 12ch (digital)
- 2.4Kw Dimmer Racks 17 x units
- 2.4Kw Dimmer Channels 204 x channels
- 5Kw Dimmer Racks 2 x units
- 5Kw Dimmer Channels 24 x channels
- Portable Dimmer Racks 4 x 2.4Kw dimmer units are portable
- Portable Dimmer Channels 48 x channels

Dimmer Patching

Patch points are numbered from PS to OP and relate 1:1 to each dimmer channel

Stage Overhead Patch Points

All overhead patch points are terminated on the fly gallery and re-patched to LX bars

- LX 1 36 x patches (patch points 001 – 036)
- LX 2 24 x patches (patch points 037 – 061)
- LX 3 24 x patches (patch points 062 – 086)
- LX4 24 x patches (patch points 087 – 110)
- Cyc 4 x patches (patch points 118 – 121)
- Fly Gallery 24 x patches (patch points 112 – 135)

FOH Patch Points

- FOH 36 x patches (patch numbers 137-173)
- Balcony PS 6 x patches (patch numbers 185-190)
- Balcony OP 6 x patches (patch numbers 191-196)
- Perch PS 8 x patches (patch numbers 202-210)
- Perch OP 8 x patches (patch numbers 211-218)

Other Patch Points

- Control Room 2 x patches (patch numbers 199-200)
- Stage OP Wall 10 x patches (Patch numbers 160 – 169)
- Orchestra pit 8 x patches (Patch Numbers 174 – 182)

DMX/Artnet Distribution

All DMX distribution is patched at dimmer room

- 1 x LSC NEXUS NXSR 5 port Ethernet/DMX converter
- 1 x LSC NEXUS NXS1 Single port Ethernet/DMX converter
- 2 x LSC MDRJ 10 port DMX/RDM splitter (RJ45 Ethercon)
- 2 x LSC MDRT 5 port DMX/RDM splitter (5 pin XLR)
- 2 x storm 8 8 port sACN/ArtNet

RJ45 Ethercon Patch Panels

- Bio Box 4 x patch points
- Stalls 4 x patch points
- FOH Bridge 4 x patch points
- Fly Gallery 4 x patch points
- Stage PS /OP 4 x patch points each side
- Stage US wall 4 x patch points
- Bio Comms Rack 2 x patch points
- Balcony PS/OP 1 x patch point each side
- Balcony Centre 1 x patch point
- Perch PS/OP 1 x patch point each side
- Orchestra Pit 1 x patch point

5 Pin XLR DMX Patch Panels

- Bio Box to PS Stage and dimmer room
- PS to OP link

Stage Luminaries

Profiles

MAKE	MODEL	ANGLE	DETAILS/ACCESSORIES	POWER	QUANTITY
Selecon	Pacific	12°-28°	Blue Pinch	1,000W	6 x units
Selecon	Pacific	14°-35°	Blue Pinch	1,000W	51 x units
Selecon	Pacific	23°-50°	Blue Pinch (FFT Hook Clamps)	1,000W	12 x units
Selecon	Pacific	SP	48mm	1,000W	2 x units
ProLights	EclProfile CT+	15-30	Gobo holder	264W LED	16 x units
Show Pro EK	LED Profile FC	15- 30	Gobo holder	250W LED	12 x units

Fresnels

MAKE	MODEL	ANGLE	DETAILS/ACCESSORIES	POWER	QUANTITY
Selecon	HP	7°-56°	Barn doors (limited)	1,200W	8 x units
Selecon	Rama	7°-50°	Barn doors	1,200W	48 x units
Selecon	Acclaim	6°-60°	Barn doors	650W	10 x units
Strand	Coda		4 Bay 500-watt cyc floods	500W	6 x units
Silver Star	Cyc100		RGBWA dual head cyc flood	180W LED	6 x units

Par Can Style Flood Lights

MAKE	MODEL	ANGLE	DETAILS/ACCESSORIES	POWER	QUANTITY
Show Pro	Brix FC	23/38 degrees	RGBW LED flood lights. Detachable lens system changes	4 x 65 watt	8
MTC	Par64 240v	MFL	Single Fixture	1,000W	16 x units
Dynamite	Par64 110v	MFL	Dim CH must be set at 110v	1,000W	16 x units
Martin	Rush par 2	10°-60°	Barn doors, DMX RGBW & Zoom	12 x10W LED	4 x units

Follow Spots

MAKE	MODEL	ANGLE	DETAILS/ACCESSORIES	POWER	QUANTITY
Clay Paky	Shadow LT	5°-20°	Colour wheel & DMX control	1,200W	2 x units
RJ	OZ	7°-14°	Colour flags, gobo	600W LED	2 x units

Moving Lights

MAKE	MODEL	ANGLE	DETAILS/ACCESSORIES	POWER	QUANTITY
Martin	MH6	10°-60°	DMX Pan, Tilt, Zoom, RGBW	150W LED	20 x units
Ayrton	Diablo	7°-53°	CMY	300W LED	6 x units

Effects Lighting

Smoke / Haze

- Look Solutions Unique 2.1 hazer 1 x unit
- Antari HZ-500 Hazer 1 x unit
- Antari Z1500 1500W smoke machine 1 x unit
- Antari AF3 DMX Fan 1 x unit

Effects

- 20-inch mirror ball with motor 1 x unit
- 4-foot UV fluro with protective cage 2 x units

RGB LED (Light Emotion)

- P64LED 30W double yoke 20 x units
- LEDBAR 35W narrow beam effect 4 x units

House Lights

Independent control

- C-BUS system
- DMX

Control positions

- PS at SM desk C-BUS control
- Control room/bio box C-BUS control
- Lighting desk DMX

Fade time adjustable

- C-BUS system 4 or 8 seconds
- DMX Anytime

Lighting Notes

On stage lighting bars cannot be swung.

All standard rig wash fixtures have FFT Pan Setup on the hook clamp, this means the hook clamp cannot be removed this also applies to the Profiles located on perch booms.

All onstage LX bar patches are terminated and patched at the loading gallery before continuing to the dimmer room.

Standard Lighting Plot

See next page.

Audio-visual

Projector

Panasonic PT-MZ16KLWE

- Lens ET-EMT700
- 16k Lumen
- Fixed position on Balcony

Other projectors may be available on request

Projection Surfaces

Draper Stage Screen

- 6100mm x 3400mm
- 16:10 ratio
- Front projection surface only
- Flown only (not freestanding)
- Black Border

Fast Fold - 10' x 7.5' (3 x screens available)

- Front or rear projection surfaces
- Freestanding or flown
- Black Border

Cyclorama Curtain

- Front projection surface only

Scrim

- Front projection for best result

Other projection surfaces may be available on request

Video Displays

Optoma HD7700

- 7000 Lumen
- Multiple inputs

A2T LCD 75" "Smart TV" on mobile trolley with shelf and camera bracket

- 3 x HDMI
- USB Playback (JPEG, MP4)
- Built-in speakers
- 2 available

Teac LCD TV

- 22-inch monitor
- LCD display

LG 24MP300 (3 available)

- 24-inch-wide screen
- LCD display

ASUS 22

- 22-inch-wide screen
- LCD display

AV Playback

LG DV380 DVD player

- No remote control

Highland DVD-988 DVD player

- DVD+/- R/RW, CD, DVD, MP3, MP4, VCD, SVCD
- No remote control

Yamaha BD-S473 Blu-Ray Player

- No remote control

PC Laptop

- Two available

Video Conferencing

Logitech Rally Plus Video Conferencing system

Supports all cloud-based collaboration systems with host computer

- 7 x mic pods
- 7 x mic pod hubs
- 4K Rally Camera
- Video and Table Hubs

Tandberg MX 880 IP Video conferencing unit

- With plate microphone
- Data ready
- Aux in and out

Various other PC based video conferencing tools available on request

Video Transport, Switching and Processing

AMX/SVSI N1000 Series AVoIP System

- 3 encoders
- 6 decoders for point to point and matrixed video links with audio
- HDMI and VGA inputs to HDMI outputs with on-board scaling
- Audio embedded or separate line level inputs plus AES67 streams
- Compatible with Dante systems
- Require gigabit Ethernet switches with POE (supplied).

Roland V-60HD Vision Switcher/Mixer and Monitor

- 6 channels – 4 x SDI, 2 x HDMI with scaling, 1 x RGB/Component
- Program, Preview and Aux output buss
- PIP, split screens and down stream keyer
- Automatic audio mixing, embedding, de-embedding
- Chroma/luma key plus wipes and fades
- USB slot for frame store in png or bitmap formats.
- 15.6" Monitor for Multi view output, Previews, Program and display viewing, built-in to case

Black Magic ATEM ISO Pro

- 4 x HDMI inputs with scaling
- Multi-screen output to HDMI
- Audio embedding/de-embedding
- Ethernet output + USBC output
- Chroma/ Luma key effects
- Still frame storage

Kramer Presentation Switcher VP774A

- Input: HDMI, SDI, VGA, Component
- Output: 2 x HDMI, 1 x SDI with scaling
- Audio embedding, de-embedding
- PIP, split screen and chroma/luma key effects
- Fade through black switching

Decimator Designs MD Cross V2 (2 available)

- HDMI to SDI cross convertor with scaling.

Decimator Designs MD-LX (2 available)

- Bi-directional HDMI/SDI convertor.

Magewell USB Capture 4K Plus HDMI

- 4K HDMI capture to USB3 with loop through connector
- Mic level audio input/output

Magewell USB Capture 4K Plus SDI

- 4K SDI capture to USB3 with loop through connector
- Line level audio input/output

Kramer Splitter/Amp

- 1:4 out 15 pin D-Sub XGA
- 1:4 HDMI x 2
- 1:2 HDMI x 2

Altinex Splitter/Amp

- 1 in 2 out 15 pin D-Sub XGA

Kramer XGA Cat5 link

- 1 in 4 out 15 pin D-Sub XGA

Image acquisition devices

Logitech Rally PTZ camera

- 4K PTZ webcam
- USB3 output
- 15x zoom

PTZ Optics 20x zoom NDI/SDI/HDMI camera

- Full HD resolution
- NDI ethernet output
- SDI output
- Ethernet control

PTZ Optics 12x zoom NDI/SDI/HDMI camera

- Full HD resolution
- NDI ethernet output
- SDI output
- Ethernet control

Panasonic AG-CX10 Camcorder

- 4K recording to Dual SD cards
- 24 x zoom
- Dual XLR Mic/line audio inputs
- NDI/SDI/HDMI outputs
- Stand-alone live streaming to RTMP/RTMPS/RTSP
- Manfrotto Fluid Head tripod to suit.

Fire Precautions & Safety Requirements

Fire Safety Curtain

A fire safety curtain is installed. Fire safety curtain must always remain free from obstruction.

In the event that there is a fire, the fire curtain will be activated.

Note: Measurement is to the downstage edge of the Fire Curtain.

- Thickness of Fire Curtain 80mm
- Distance from setting line 0mm

General Safety

- All Scenery, props, masking etc must be rendered non-flammable to the satisfaction of Albury Entertainment Centre.
- All presenters must present a Risk Assessment to Albury Entertainment Centre
- In the event of an emergency, please follow the direction of venue staff of whom all are Wardens.

Stage Managers Desk

Console

Stage Managers desk is located in prompt corner. The console can be moved on its wheels and has height adjustment to accommodate sit stand. The console is fitted with two dual lights that can be adjusted and dimmed. Control over house lights can be from here or on DMX U1.

Talkback

Wireless Units

HME DX210

- In single channel mode
- 6 Belt Packs (4 talking at one time. All can listen. Ties into Wired intercom system)

Master Unit

Creative Audio ConcertCom C110

- Command Centre located in control room rack
- Currently running 1 loop & linked in CH1 on wireless units
- Total sub stations 7 (2 older units available)
- Total headsets 7 (2 older units available)

Talkback Patching

- Dome Rooms (PS and OP of bio box)
- Control Room Lighting
- Control Room Audio
- PS DS Corner – at SM Desk
- OP DS Corner
- Centre Orchestra Pit

Paging/Show Relay

- Paging to the dressing rooms is available from the stage manager's desk.
- Show relay is distributed to all dressing rooms
- Each room has an individual volume control.

Stage Monitor

High definition 720p IP colour camera

- The prime role of this camera is for Audio Description (where audio description is required this unit will be controlled by the audio describers)
- Additional cameras can be arranged (sufficient notice if necessary)
- Some delay is experienced between live action and the same action on screens due to the IP network system.

Internet/Wi-Fi

Free Wi-Fi

- Shared Albury City Free Wi-Fi

Power

Power Outlets (3 Phase)

50A Wilco Connection

- Stage - PS DS wall 2 outlets

32A Wilco Connection

- Stage - PS DS wall 1 outlet
- Stage - OP DS wall 1 outlet
- Stage - OP US wall 1 outlet
- Stage - C US wall 1 outlet
- Fly Gallery - DS PS 1 outlet

External Building Power Outlets (3 Phase)

32A Wilco Connection

- East of main entry 2 outlets
- West of main entry 2 outlets

Power Distribution (3 Phase)

32A 3 Phase distro boxes with 4 x 240V outlets and safety switch

- 2m cable 3 distros
- 5m cable 2 distros

Amenities

Dressing Rooms

Dressing Room 1

- 2 pax (2.3m x 3m)
- Mirrors, bench and sink

Dressing Room 2

- 2 pax (2.3m x 3m)
- Mirrors, bench, clothes rack and sink

Dressing Room 3

- 4 pax (3.6m x 4m)
- Mirrors, bench, clothes rack and sink

Dressing Room 4

- 2 pax (2.3m x 3m)
- Mirrors, bench, clothes rack and sink

Dressing Room 5

- 2 pax (2.3m x 3m)
- Mirrors, bench, clothes rack and sink

Dressing Room 6

- 10 pax (5.5m x 5.5m)
- Mirrors, bench, clothes rack and sink

Dressing Room 7 / Green Room

- 6 pax (4.2m x 5.5m)
- Kitchen Benches and tub chairs

Bathrooms

- Separate Male/Female bathrooms with 2 toilets and a shower in each
- Female bathroom located on ground floor (stage level)
- Male bathroom located on level one

Greenroom

- Can be found at the top of the stairs
- Fridge
- Hot water urn
- Sink
- Basic Tea & Coffee facilities

Laundry

- Access to laundry through dressing room 7 / Green Room
- LG commercial 15kg front load washer
- LG commercial 15kg front load drier
- 2 irons and ironing boards



Loading Dock from Swift St



Loading Dock from Swift St



Loading Dock. Overhead obstruction



Eastern side, Stage Door access



Stage door and Dressing Room access



Stage door and Dressing Room access



Dressing Room 1 & 2 are same size



Dressing Room 4 & 5 are same size



Corridor to Stage, from DR 1 & DR 2



Dressing Room 3 / Green Room



Audio Subscribers Room / Green Room



Laundry

0



Dressing Room 6 / Green Room



Dressing Room 6 / Green Room



Front of Theatre from Park



Stage with screen